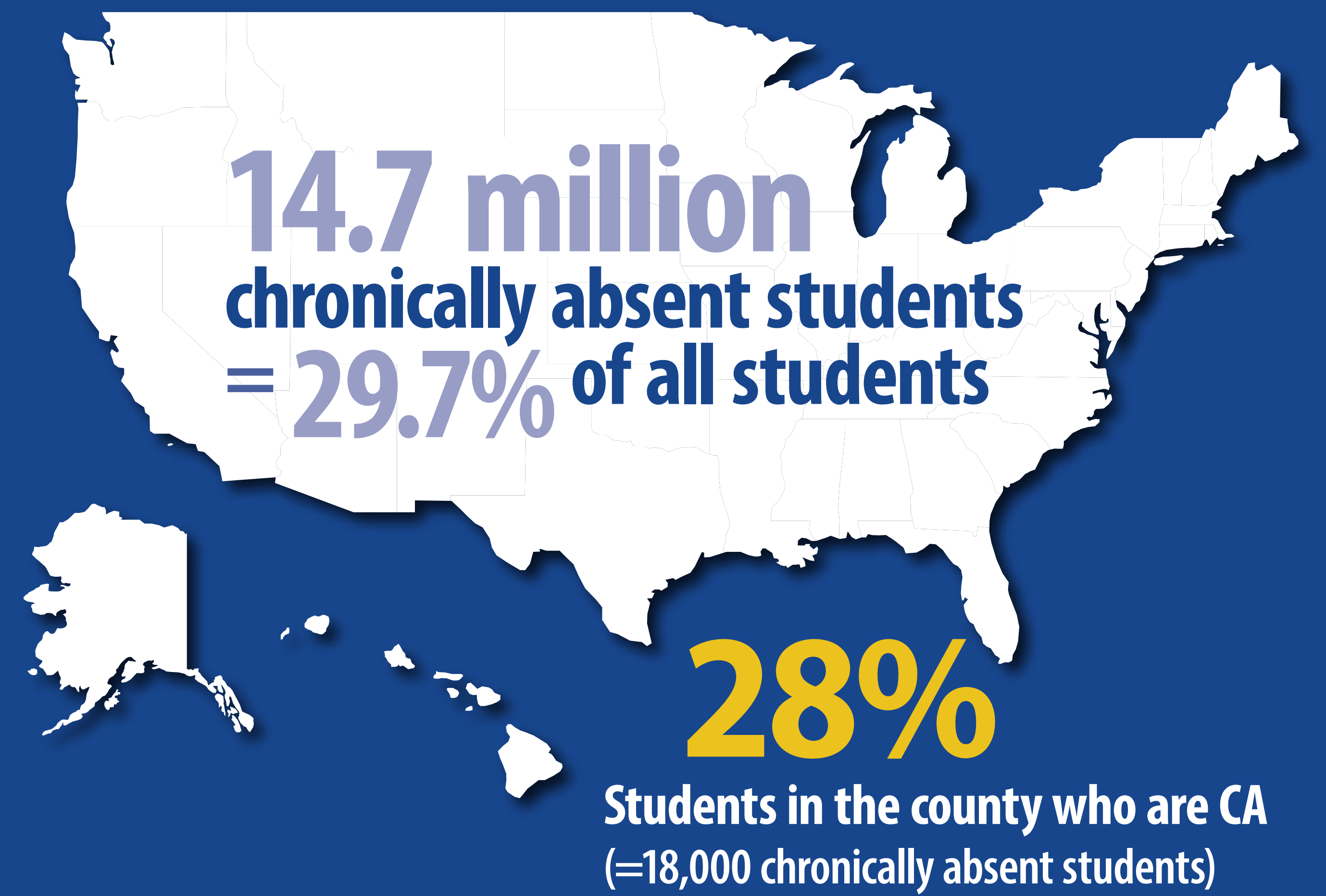


CHRONIC ABSENTEEISM

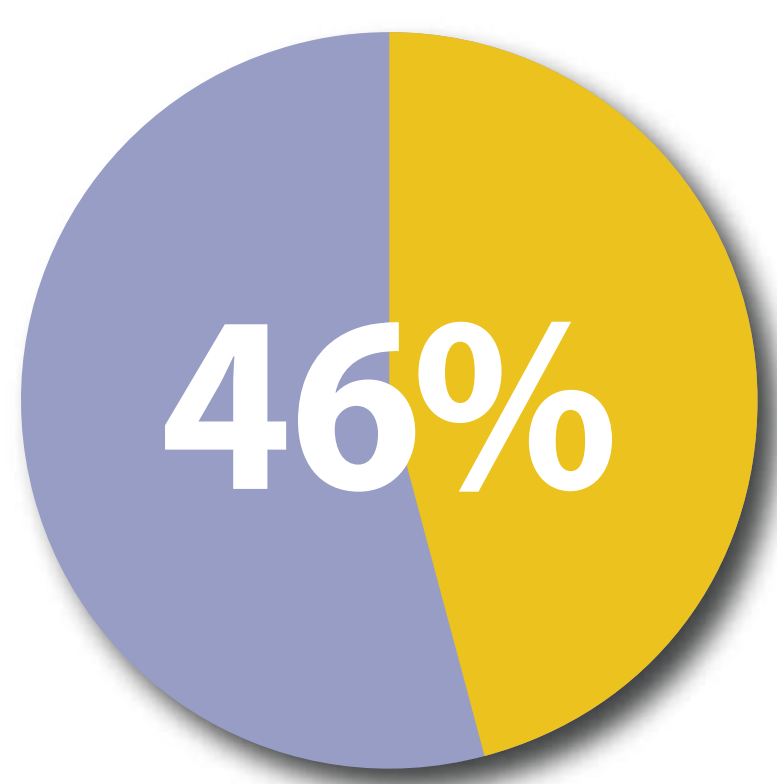
Chronic absenteeism (CA) impacts students and school districts nationwide. CA is defined as 10% of total hours absent with or without legitimate excuse in an academic year.

CA in the United States 2021-22

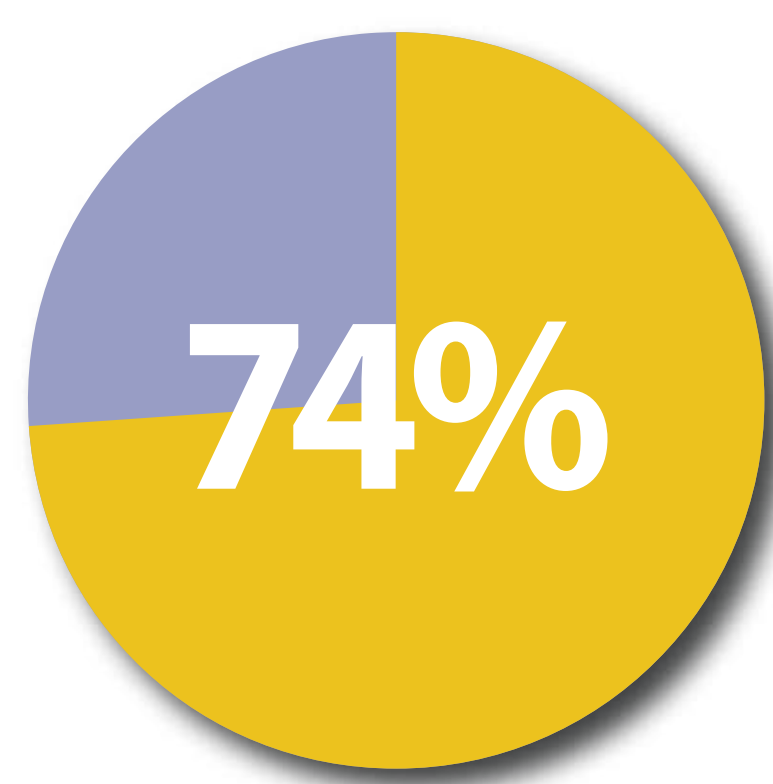


CA in Summit County Public Schools 2022-23

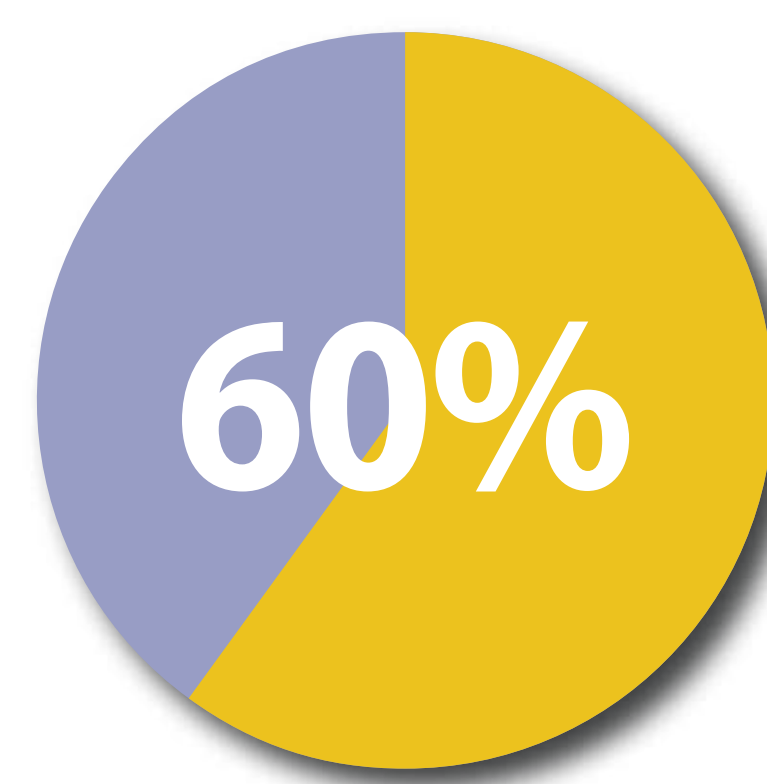
■ % of Students who are CA



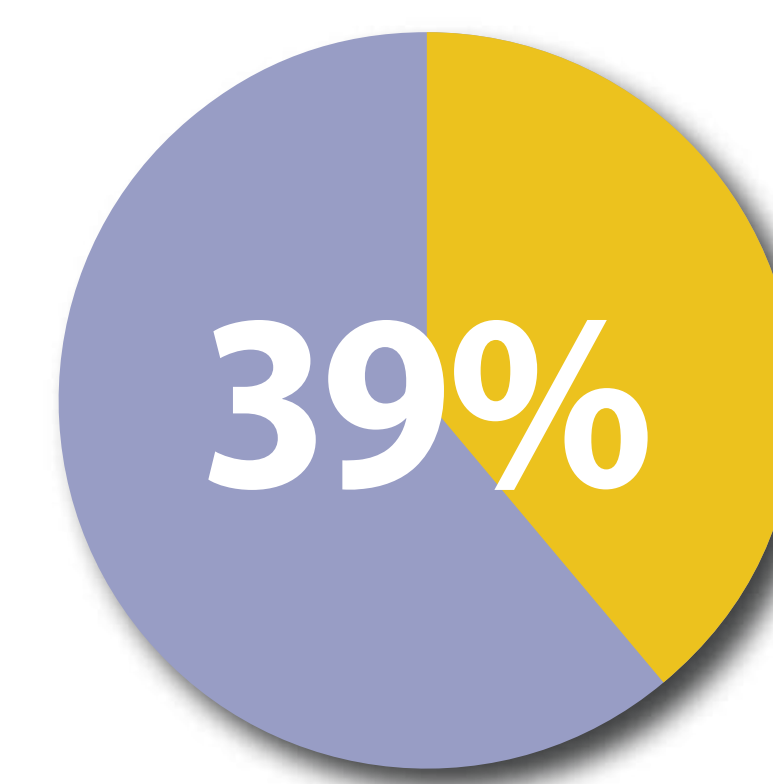
Students with satisfactory attendance



CA students who are economically disadvantaged



Students experiencing homelessness that are CA



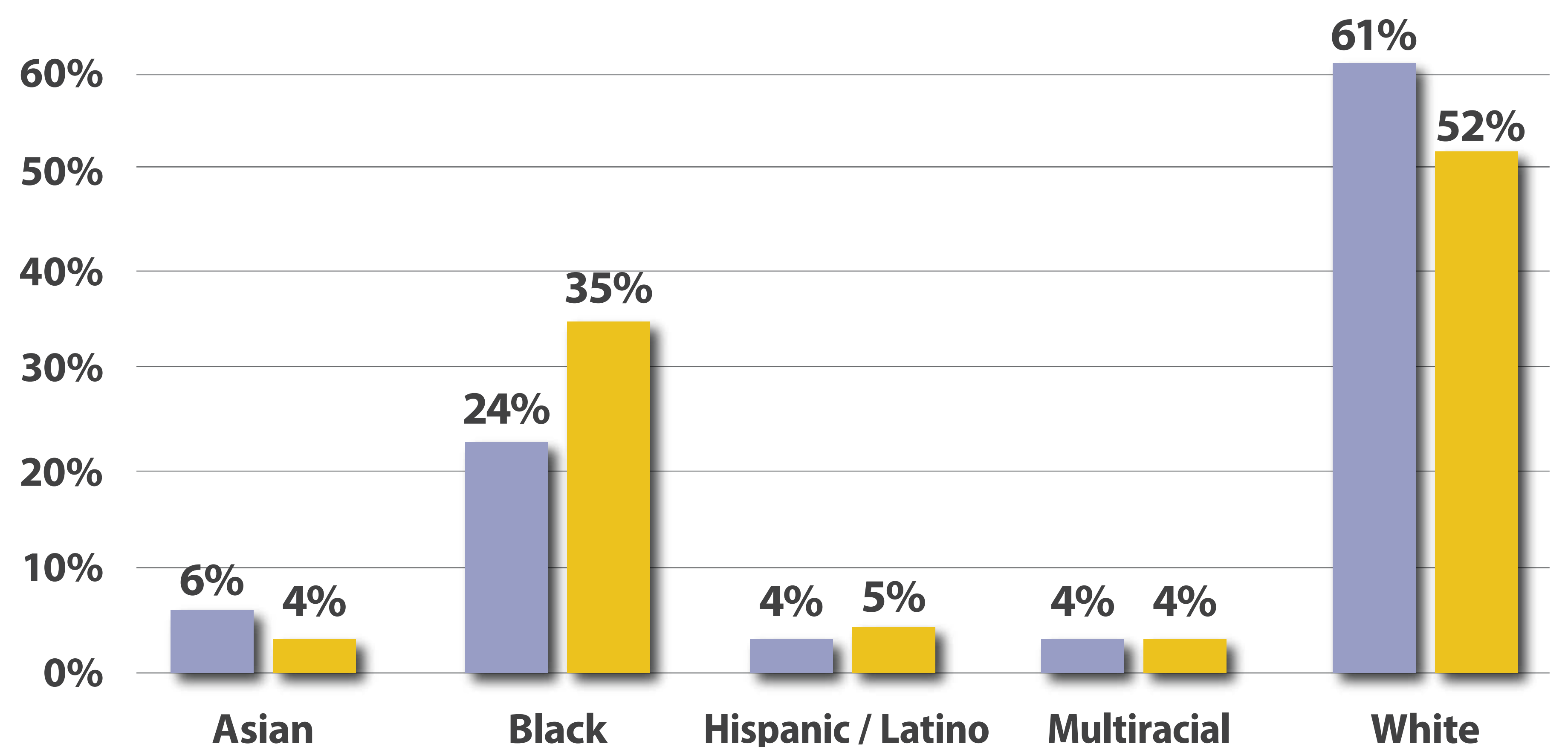
Students with an identified disability that are CA

Chronic Absenteeism by Race / Ethnicity in Summit County Public Schools

Black students experience CA at higher rates than their peers

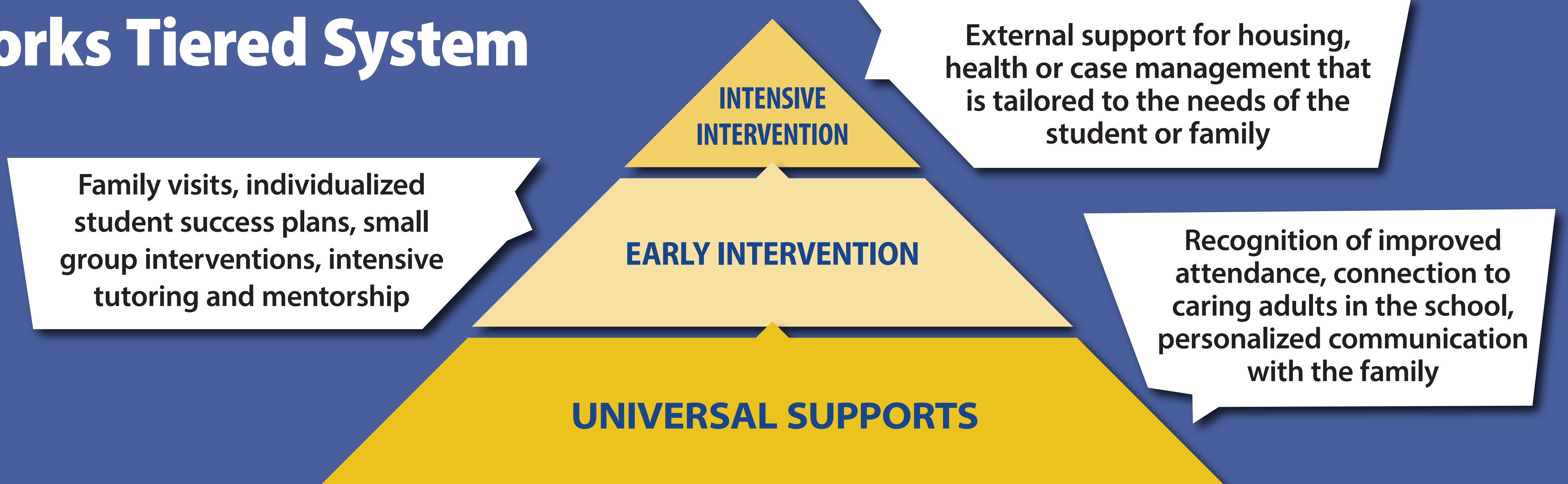
■ % of Total Population

■ % of Students who are CA



Attendance Works Tiered System

This system identifies children's needs and respective supports and interventions necessary for each tier.



Use the QR code to access our data.